



Gfap

Glial Fibrillary Acidic Protein in Mature Astrocytes

Antibody Information

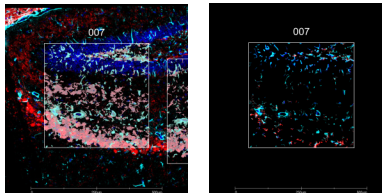
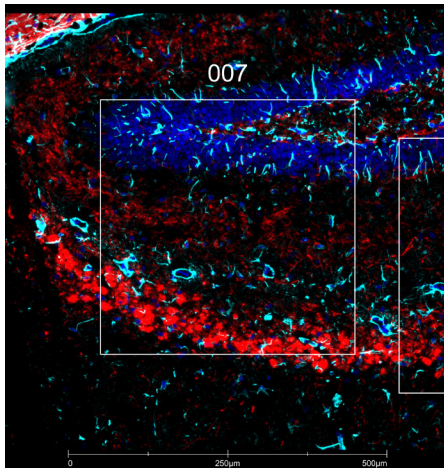
Clone ID	2E1.E9
Fluorophore	AF647
Antibody Concentration	2 µg/mL
Mono or Polyclonal	Mono
Host & Isotype	Mouse IgG2b
Lot Tested	B330832

Immunofluorescent Screening Information

Tissue Type	FrF Mouse brain
Section Thickness	5 µm
HIER	10 min 100°C
Proteinase K Concentration	1 µg/mL
Fixation/Embedding	fresh frozen / OCT

Vendor Information

Vendor	BioLegend
Catalog Number/Web Link	644706



Gfap (cyan) localizes to astrocytes in mouse brain (left image). The expression pattern of these Gfap+ astrocytes can be isolated from Mbp+ neurons (red) through GeoMx segmentation (right image).

Legend

Gfap: cyan
Mbp: red
SYTO13: blue
Segmentation for Gfap: cyan
Segmentation for Mbp: pink

Stained Image Data

Exposure Time	300 ms
Signal-to-Noise	39.1
ROI Type	Geometric or Segmented

* Recommendations above are meant to act as a starting point for your own experimental optimization

For more information, please visit nanosttring.com/GeoMxDSP

NanoString Technologies, Inc.

530 Fairview Avenue North
Seattle, Washington 98109

T (888) 358-6266
F (206) 378-6288

nanosttring.com
info@nanosttring.com

Sales Contacts

United States us.sales@nanosttring.com
EMEA: europe.sales@nanosttring.com

Asia Pacific & Japan apac.sales@nanosttring.com
Other Regions info@nanosttring.com