



Iba1

Glial cells

Antibody Information

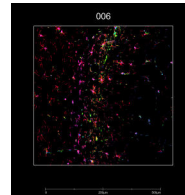
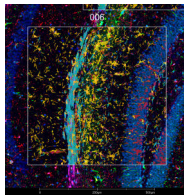
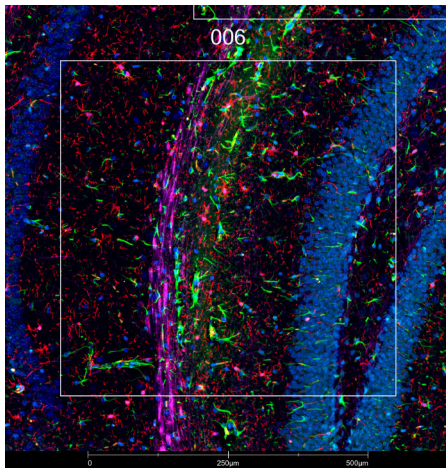
| | |
|------------------------|------------|
| Clone ID | E4O4W |
| Fluorophore | AF594 |
| Antibody Concentration | 4 µg/mL |
| Mono or Polyclonal | Mono |
| Host & Isotype | Rabbit IgG |
| Lot Tested | 2 |

Immunofluorescent Screening Information

| | |
|----------------------------|------------------|
| Tissue Type | FFPE Mouse brain |
| Section Thickness | 5 µm |
| HIER | 10 min 100°C |
| Proteinase K Concentration | 1 µg/mL |
| Fixation/Embedding | FFPE |

Vendor Information

| | |
|-------------------------|---------------------------|
| Vendor | Cell Signaling Technology |
| Catalog Number/Web Link | #48934 |



Iba1 (red) localizes to microglia in the hippocampus of a mouse brain (left image). The expression pattern of these Iba1+ microglia can be isolated from Gfap+ astrocytes (green) and Mbp+ neurons (magenta) through GeoMx segmentation (right image).

Legend

Iba1: red Gfap: green
Mbp: magenta SYTO13: blue
Segmentation for Iba1: yellow
Segmentation for Gfap: orange
Segmentation for Mbp: cyan

Stained Image Data

| | |
|-----------------|------------------------|
| Exposure Time | 300 ms |
| Signal-to-Noise | 3.5 |
| ROI Type | Geometric or Segmented |

* Recommendations above are meant to act as a starting point for your own experimental optimization

For more information, please visit nanosttring.com/GeoMxDSP

NanoString Technologies, Inc.

530 Fairview Avenue North
Seattle, Washington 98109

T (888) 358-6266
F (206) 378-6288

nanosttring.com
info@nanosttring.com

Sales Contacts

United States us.sales@nanosttring.com
EMEA: europe.sales@nanosttring.com

Asia Pacific & Japan apac.sales@nanosttring.com
Other Regions info@nanosttring.com