



# Mbp

## Myelin Basic Protein, all neurons

### Antibody Information

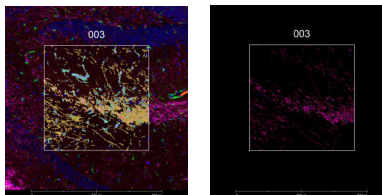
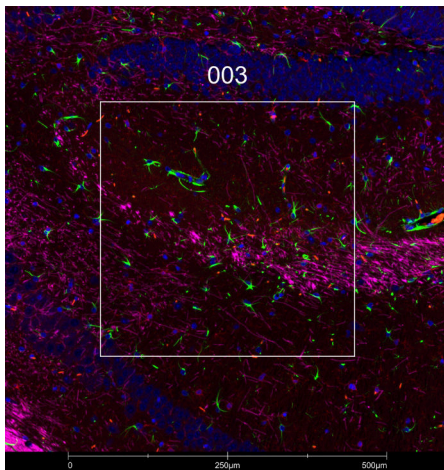
Clone ID	D8X4Q
Fluorophore	AF647
Antibody Concentration	0.5 µg/mL
Mono or Polyclonal	Mono
Host & Isotype	Rabbit IgG
Lot Tested	1

### Immunofluorescent Screening Information

Tissue Type	FFPE Mouse brain
Section Thickness	5 µm
HIER	10 min 100°C
Proteinase K Concentration	1 µg/mL
Fixation/Embedding	FFPE

### Vendor Information

Vendor	Cell Signaling Technology
Catalog Number/Web Link	<a href="#">30103</a>



Mbp (magenta) localizes to myelin-lined axonal fiber tracts of neurons in the hippocampus of a mouse brain (left image). The expression pattern of these Mbp+ neurons can be isolated from Gfap+ astrocytes (green) and Iba1+ microglia (red) through GeoMx segmentation (right image).

### Legend

Mbp: magenta      Iba1: red  
 Gfap: green      SYTO13: blue  
 Segmentation for Mbp: cyan  
 Segmentation for Iba1: yellow  
 Segmentation for Gfap: orange

### Stained Image Data

Exposure Time	200 ms
Signal-to-Noise	12.2
ROI Type	Geometric or Segmented

\* Recommendations above are meant to act as a starting point for your own experimental optimization

For more information, please visit [nanosttring.com/GeoMxDSP](https://nanosttring.com/GeoMxDSP)

#### NanoString Technologies, Inc.

530 Fairview Avenue North  
 Seattle, Washington 98109

T (888) 358-6266  
 F (206) 378-6288

[nanosttring.com](https://nanosttring.com)  
[info@nanosttring.com](mailto:info@nanosttring.com)

#### Sales Contacts

United States [us.sales@nanosttring.com](mailto:us.sales@nanosttring.com)  
 EMEA: [europe.sales@nanosttring.com](mailto:europe.sales@nanosttring.com)

Asia Pacific & Japan [apac.sales@nanosttring.com](mailto:apac.sales@nanosttring.com)  
 Other Regions [info@nanosttring.com](mailto:info@nanosttring.com)